

FCC 2023 Survey Results Message



Process

- **Survey Congregations**

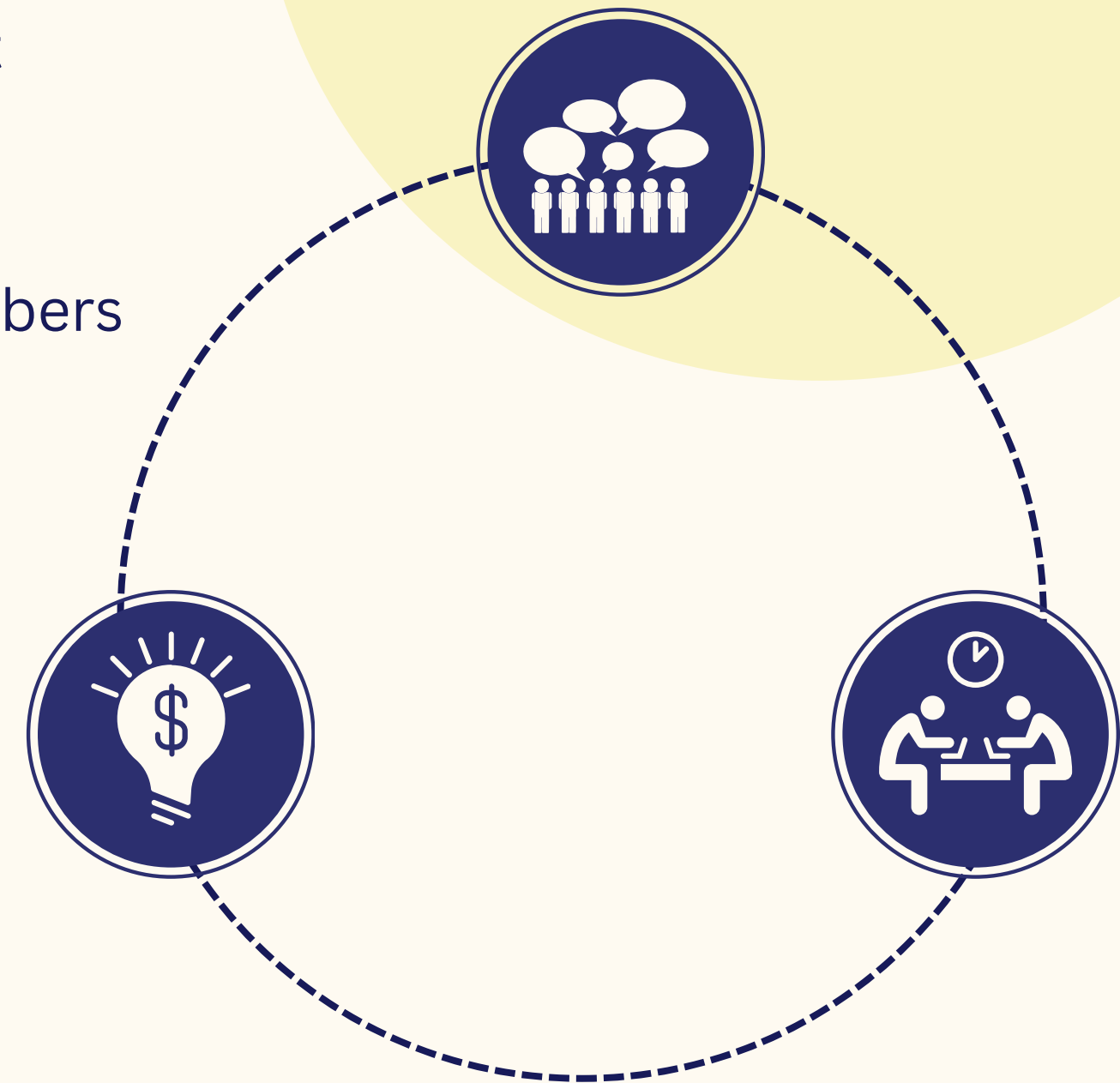
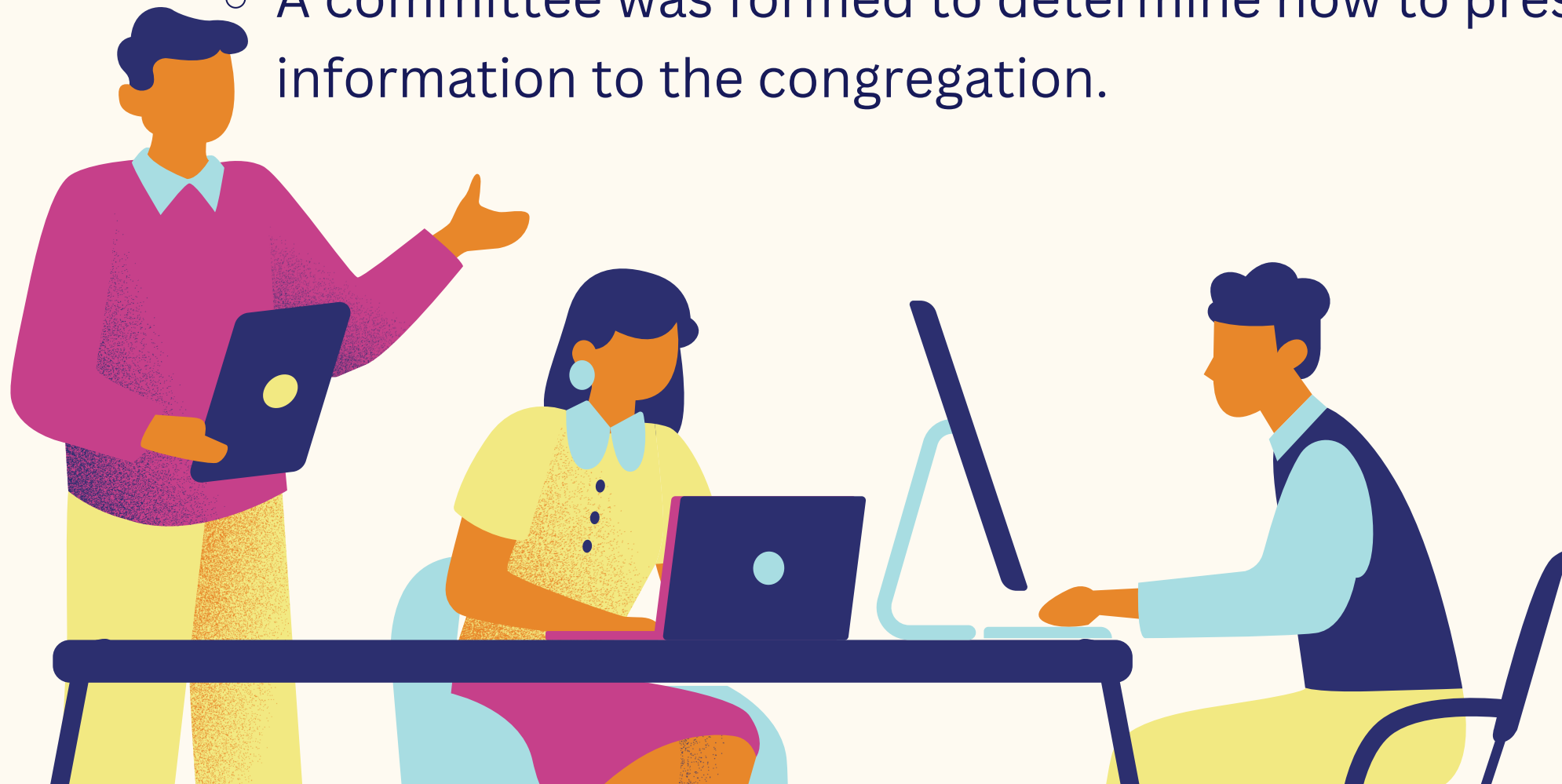
- Each member of the congregation was given the option to complete the survey. Questions were answered on a scale of 5-1 of most importance.

- **Small Group Discussions**

- Several small group discussions were scheduled to allow members to discuss what is important to them and the church.

- **Interpreting the results**

- A committee was formed to determine how to present this information to the congregation.



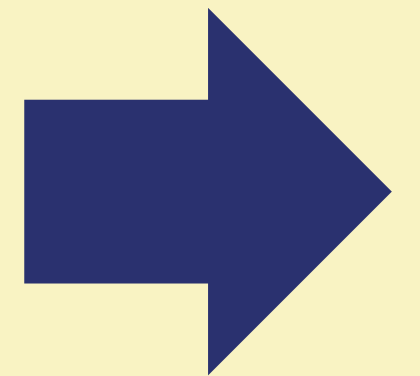
Marthas and Marys



First Christian Church Disciples of Christ Minneapolis is a church of Marthas (service) and Marys (spiritual growth) who value worship and preaching that is relevant to today's world, welcoming all individuals to worship and the communion table. Come and be fed and reach out and be of service. First Christian values the hybrid worship format of in-person and online spaces.

Survey Categories

1. Spiritual Growth & Fellowship
2. Spiritual Care & Advocacy
3. Outreach
4. Worship
5. SpringHouse
6. Logistics



Vision & Mission Statements

Alliteration of the 5 Rs

We used FCC's vision & mission statements to create these couplings to capture the Mary/Martha focus; the advocacy and outreach; the worship and preaching; and inclusiveness; etc. that are emphasized in the survey while recognizing we respect and embrace all of God's creation.



Reflect & Resonate

[Spiritual Growth and Fellowship / Spiritual Care categories]

Reach Out & Raise Awareness

[Advocacy and Outreach categories from the survey]

Respect & Receive

[This was not a survey category, but a pervasive theme that ran through the survey categories and is a part of our Mission Statement]

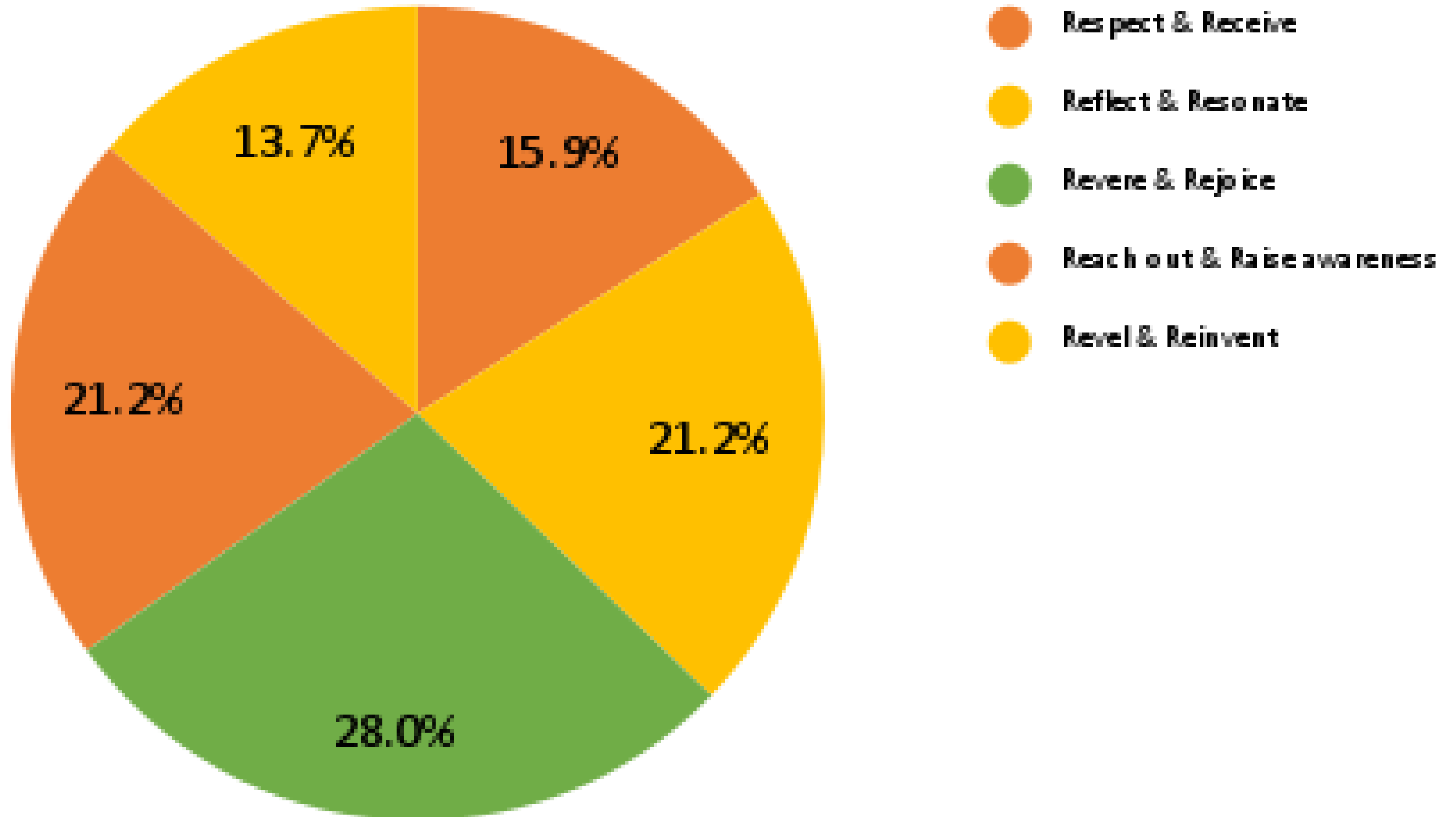
Revel & Reinvent

[Springhouse category]

Revere & Rejoice

[Worship category from the survey]

5 R's Distribution



Overall Survey Results

Top 5 Scores

Bottom 5 Scores

| | |
|--|-----|
| Meetings conducted on Zoom | 232 |
| Bringing a message of Christ' radical, inclusive love to the world | 229 |
| A high quality, inviting live streamed worship | 226 |
| Welcoming worship space for in-person/on-site worship | 219 |
| Streaming our worship services at home, instead of coming to Springhouse | 214 |

| | |
|---|-----|
| Joint worship in the park | 140 |
| FCC & friends Book Group | 133 |
| Small Group Bible Study | 131 |
| Worship services based on themed worship series | 123 |
| Men's Fellowship | 110 |

Highest Score: 232
Lowest Score: 110
Median: 171



Respect & Receive

As Christ's ambassadors, WE
"RESPECT" God and God's
creation and WE

"RECEIVE" all God's children by
welcoming, affirming and
embracing all
individuals of any background,
ability, economic status,
ethnicity, culture, race,
gender identity or sexual
orientation, including people of
all identities without
reservation in full fellowship and
leadership in our church.

| Universal Communication | 232 |
|--|------------|
| Bringing a message of Christ's radical, inclusive love to the world | 229 |
| A commitment to diversity in our worship, leadership, and community involvement | 213 |
| A commitment to recognizing and dismantling white supremacy | 207 |
| Participation in Pride and LGBTQ+ youth events | 189 |
| Social justice education online (such as the Action Project, Voice 2022, regional programs) | 171 |
| Pastoral staff representing us at protests, rallies and at the State capitol | 154 |



All items

Reflect & Resonate

WE “**REFLECT**” and WE “**RESONATE**” on God’s word honoring freedom of belief, celebrating our differences and being united by Christ while we listen, share, nurture and play in fellowship with each other.



| | |
|---|------------|
| Emergency care support by pastoral staff | 202 |
| Fellowship gatherings/activities for the whole church, such as sabbatical activities | 197 |
| Disciples camps for children & youth | 192 |
| Care visits by pastoral staff | 174 |
| Pastoral counseling with pastoral staff | 164 |
| Pastoral staff’s leadership in regional and national disciples work | 164 |
| Online coffee hours/happy hours | 157 |
| Adult education | 156 |
| Celebrating long-term memberships, birthdays and anniversaries | 155 |
| Women’s fellowship | 150 |
| Care visits by elders | 147 |

Reflect & Resonate

WE “**REFLECT**” and WE “**RESONATE**” on God’s word honoring freedom of belief, celebrating our differences and being united by Christ while we listen, share, nurture and play in fellowship with each other.



Top 3

| | |
|---|------------|
| Emergency care support by pastoral staff | 202 |
| Fellowship gatherings/activities for the whole church, such as sabbatical activities | 197 |
| Disciples camps for children & youth | 192 |

Bottom 3

| | |
|---|------------|
| Celebrating long-term memberships, birthdays and anniversaries | 155 |
| Women’s fellowship | 150 |
| Care visits by elders | 147 |

All Items

Revere & Rejoice

As disciples, WE “**REVERE**” God through worship, prayer, ministering to each other and the body of Christ, and WE “**REJOICE**” at its impact.



| | |
|--|------------|
| A high quality, inviting live streamed worship | 226 |
| Welcoming worship space for in-person/on-site worship | 219 |
| Streaming our worship services at home, instead of coming to Springhouse | 214 |
| Worship service elements that make the bible applicable for today's world | 203 |
| Worship service elements that make the bible relevant for your life. | 199 |
| Worshipping in the sanctuary in community with other people | 198 |
| Lay involvement in worship service planning | 197 |
| Worship music provided by our members through choirs and handbells | 196 |
| Worship music provided by paid professionals | 175 |
| Special guest musicians (brass band, Dixieland band, jazz band...) | 169 |
| Children's sermon, activity table, Sunday school | 167 |
| Ability to attend our live-streamed worship in small groups, outside of SpringHouse | 152 |
| Worship services based on themed worship series | 123 |

Revere & Rejoice

As disciples, WE
“**REVERE**” God through
worship, prayer,
ministering to each
other and the body of
Christ, and WE
“**REJOICE**” at its impact.



Top 3

| | |
|---|------------|
| A high quality, inviting live streamed worship | 226 |
| Welcoming worship space for in-person/on-site worship | 219 |
| Streaming our worship services at home, instead of coming to Springhouse | 214 |

Bottom 3

| | |
|--|------------|
| Children’s sermon, activity table, Sunday school | 167 |
| Ability to attend our live-streamed worship in small groups, outside of SpringHouse | 152 |
| Worship services based on themed worship series | 123 |

Reach out & Raise Awareness

Like Martha, who sought to be of service, WE “**REACH OUT**” as disciples of Jesus Christ who actively care for people by serving the local and global community, especially where there is hunger, suffering and brokenness; and WE “**RAISE AWARENESS**” by advocating for others and bringing the message of Christ’s radical inclusive love to the world.

All Items

| | |
|--|------------|
| Hands-on outreach projects (Every Meal, sandwich making, Bags of Grace, etc.) | 205 |
| Our visibility to the community in new ways, as well as our website and a social media presence | 203 |
| Special outreach collections (food, school supplies, clothing and bedding) | 199 |
| A percentage of our church budget (tithe) devoted to outreach giving | 199 |
| Participation in Pride and LGBTQ+ youth events | 189 |
| Social justice education online (such as The Action Project Voices 2022, regional programs) | 171 |
| Servant trips (domestic/international) | 161 |
| Pastoral staff representing us at protests, rallies and at the State capitol | 154 |
| FCC & Friends Book Group | 133 |
| Small Group Bible Study | 131 |
| Men's Fellowship | 110 |



Reach out & Raise Awareness

Like Martha, who sought to be of service, WE “**REACH**

OUT” as disciples of

Jesus Christ who actively care for people by serving the local and global

community, especially where there is hunger, suffering and brokenness; and WE

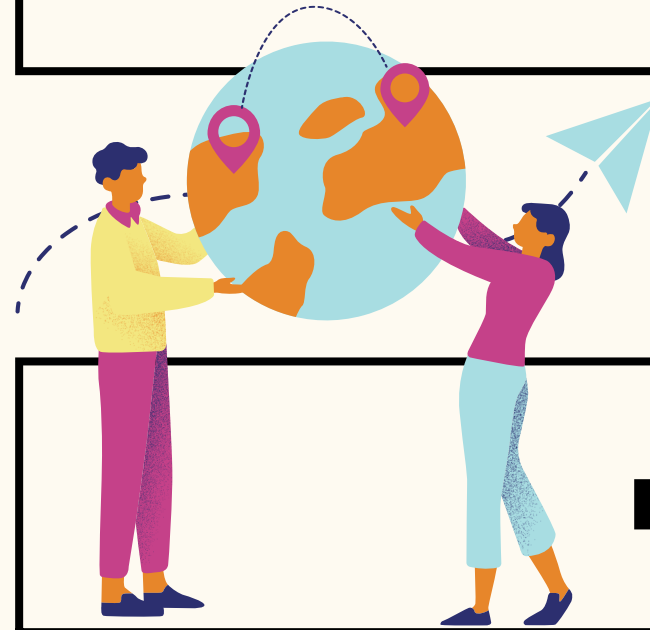
“**RAISE AWARENESS**” by

advocating for others and bringing the message of

Christ’s radical inclusive love to the world.

Top 3

| | |
|--|------------|
| Hands-on outreach projects (Every Meal, sandwich making, Bags of Grace, etc.) | 205 |
| Our visibility to the community in new ways, as well as our website and a social media presence | 203 |
| Special outreach collections (food, school supplies, clothing and bedding) | 199 |



Bottom 3

| | |
|-------------------------------------|------------|
| FCC & Friends Book Group | 133 |
| Small Group Bible Study | 131 |
| Men's Fellowship | 110 |

Reinvent and Revel

Like Jesus, WE “**REINVENT**” and WE “**REVEL**” in what it means to be in ecumenical ministry and mission through our shared worship and community spaces at SpringHouse Ministry Center.



All Items

| | |
|--|------------|
| Shared children’s and youth ministries with other SpringHouse congregations | 195 |
| Parking near the church | 187 |
| Shared activities with other SpringHouse congregations | 174 |
| Share fellowship hour with other SpringHouse churches | 172 |
| Creative, new small group fellowship opportunities | 165 |
| Joint worship services at SpringHouse | 155 |
| Driving distance to/from church for members and visitors | 150 |
| Joint worship in the park | 140 |

Reinvent and Revel

Like Jesus, WE “**REINVENT**” and WE “**REVEL**” in what it means to be in ecumenical ministry and mission through our shared worship and community spaces at SpringHouse Ministry Center.



Top 3

| | |
|--|------------|
| Shared children’s and youth ministries with other SpringHouse congregations | 195 |
| Parking near the church | 187 |
| Shared activities with other SpringHouse congregations | 174 |

Bottom 3

| | |
|---|------------|
| Joint worship services at SpringHouse | 155 |
| Driving distance to/from church for members and visitors | 150 |
| Joint worship in the park | 140 |

Vision & Mission Statements

Alliteration of the 5 Rs

We used FCC's vision & mission statements to create these couplings to capture the Mary/Martha focus; the advocacy and outreach; the worship and preaching; and inclusiveness; etc. that are emphasized in the survey while recognizing we respect and embrace all of God's creation.



Reflect & Resonate

WE “**REFLECT**” and WE “**RESONATE**” on God’s word honoring freedom of belief, celebrating our differences and being united by Christ while we listen, share, nurture and play in fellowship with each other.

Reach Out & Raise Awareness

Like Martha, who sought to be of service, WE “**REACH OUT**” as disciples of Jesus Christ who actively care for people by serving the local and global community, especially where there is hunger, suffering and brokenness; and WE “**RAISE AWARENESS**” by advocating for others and bringing the message of Christ’s radical inclusive love to the world.

Respect & Receive

As Christ’s ambassadors, WE “**RESPECT**” God and God’s creation and WE “**RECEIVE**” all God’s children by welcoming, affirming and embracing all individuals of any background, ability, economic status, ethnicity, culture, race, gender identity or sexual orientation, including people of all identities without reservation in full fellowship and leadership in our church.

Reinvent & Revel

Like Jesus, WE “**REINVENT**” and WE “**REVEL**” in what it means to be in ecumenical ministry and mission through our shared worship and community spaces at SpringHouse Ministry Center.

Revere and Rejoice

As disciples, WE “**REVERE**” God through worship, prayer, ministering to each other and the body of Christ, and WE “**REJOICE**” at its impact.

5 Feedback questions



01.



What keeps you connected?

02.



What is FCC good at that others might be attracted to?

03.



What are some areas that you would like to see us grow and develop?

04.



What are things that are essential to who we are as FCC of Minneapolis?

05.



What other things haven't been named yet?

What keeps you connected?



| | |
|--|--|
| Relationships | SpringHouse |
| Worship | Outreach opportunities |
| Core Disciples traditions | Love and acceptance |
| We hold space for future planning and connection | Women's fellowship and Book Group |
| Belonging to a community of faith connected in and through the People, Rituals, Traditions, and Service of our Church | |

What is FCC good at that others might be attracted to?



| | |
|-----------------------------------|-------------------|
| Overall Spirit | Technology |
| Push Boundaries | Sermons |
| Music | Bible |
| Tapping into our strengths | Outreach |
| Community | Growth |

What are some areas that you would like to see us grow and develop?



| | |
|---------------------------------------|--|
| Communication | Technology |
| Youth Ministries/ Children | Squiggle Space/ Sunday School |
| Music | Parking |
| Short term Bible Study | Worship |
| Community | Ritual |
| Getting our message out | Outreach |

What are things that are essential to who we are as FCC of Minneapolis?



| | |
|---|---|
| Outreach | Disciples' Values |
| Inclusivity | Families that go way back with other people weaving in; |
| Nurture and investment in our children and youth | Historical significance in the city |
| History (past) implies a future | Opportunities for Lay Leadership; everyone has areas where they agree/offer to participate |

What other things haven't been named yet?



We need to be talking about/need awareness of our financial situation

We don't do a good job of presenting who we are or who we are not.

We should check in with people we haven't seen in awhile

SpringHouse has changed

Lost leadership - talented people getting older, not able to be so active

Collaboration and reflecting through our diverse traditions is a gift

ONE FINAL NOTE:

We are a hidden gem. How do we sparkle brightly to share the **Light**?



NEXT STEPS

- Use survey results to create a narrative budget
- Use Narrative Budget for decision making on Church budget



As we bring a message of Christ's
radical inclusive love to the world:

We Respect & Receive

We Reflect & Resonate

We Revere & Rejoice

We Reach Out & Raise Awareness

We Revel and Reinvent

**We as the Congregation of FCC
Minneapolis have spoken with
our hearts, souls, and minds
through the survey and
comments.**

